




SIMPLEX Mfg

Aviation Mission Equipment

SERVICE LETTER
FOR REPAIR OF MODEL 301
COCKPIT DISPLAY BOX DOOR POSITION LED

Document No.: SL2009-007
Date: September 8, 2009
Used On: Simplex Model 301

Approved by: 
Tim Pyle
Sustaining Engineering and QA Manager
Simplex Mfg.



Log of Revisions

<u>Rev.</u>	<u>Description of Revision</u>	<u>Date</u>	<u>Approved</u>
I/R	Initial Release	September 8, 2009	TWP



SYSTEM MODELS AFFECTED:

Model 301 Fire Attack System (FAS)

FAA APPROVAL:

N/A

MANPOWER:

Two (2) MHRS (Estimated)

COMPLIANCE:

Only required if Cockpit Display Box (CDB) door position LED is operating backwards to the operating description in the Model 301 RFMS

SPECIAL TOOLS:

None

MATERIALS:

- Simplex P/N 300-504005-003 LED ASSEMBLY
- Drawing 300-504001-007

WEIGHT AND BALANCE:

None

ELECTRICAL LOAD DATA:

None

PUBLICATIONS AFFECTED:

None



ACCOMPLISHMENT INSTRUCTIONS:

Step	Description
1	Remove the seven (7) screws (item 3) from the CDB outer shell as shown on drawing 300-504001-007 zone C6, C7, D7 and D8 Remove outer CDB shell to access internal components. Retain hardware for re-installation.
2	Remove the two (2) screw assemblies items 14, 15 and 16 shown on drawing 300-504001-007. Retain hardware for re-installation. Reference Figure 1-1.
3	Disconnect the two (2) electrical connectors at J15 and J16 in the CDB. Reference Figure 1-2.
4	Remove LED panel from CDB.
5	Install new P/N P/N 300-504005-003 LED ASSEMBLY using hardware removed from Step 2.
6	Connect door position LED harness connector to J16 in the CDB. Reference Figure 1-3.
7	Connect the inboard LED harness to connector J15 in the CDB. Reference Figure 1-4.
8	Re-install CDB outer shell using hardware removed from Step 1. Reference drawing 300-504001-007.

This completes the removal and re-installation of the CDB LED panel.



FIGURE 1-1



FIGURE 1-2

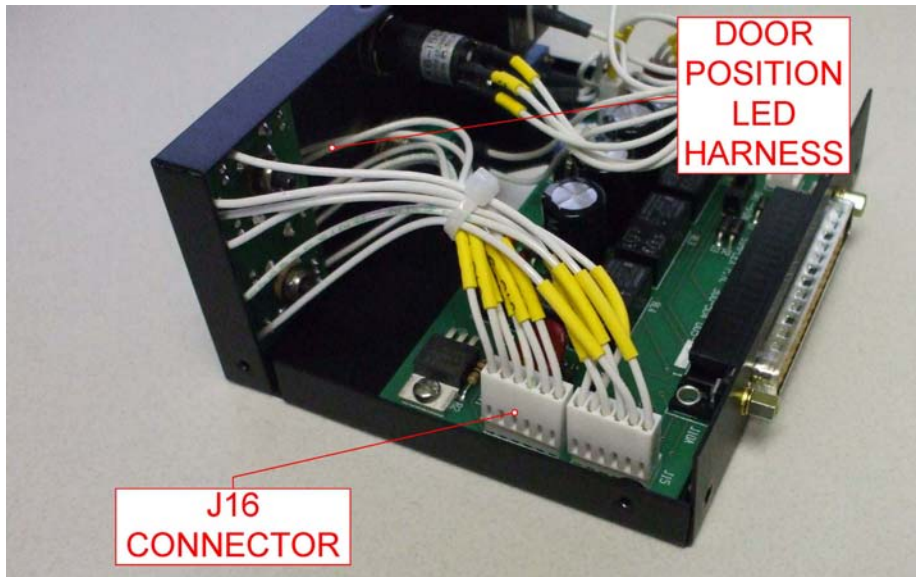


FIGURE 1-3

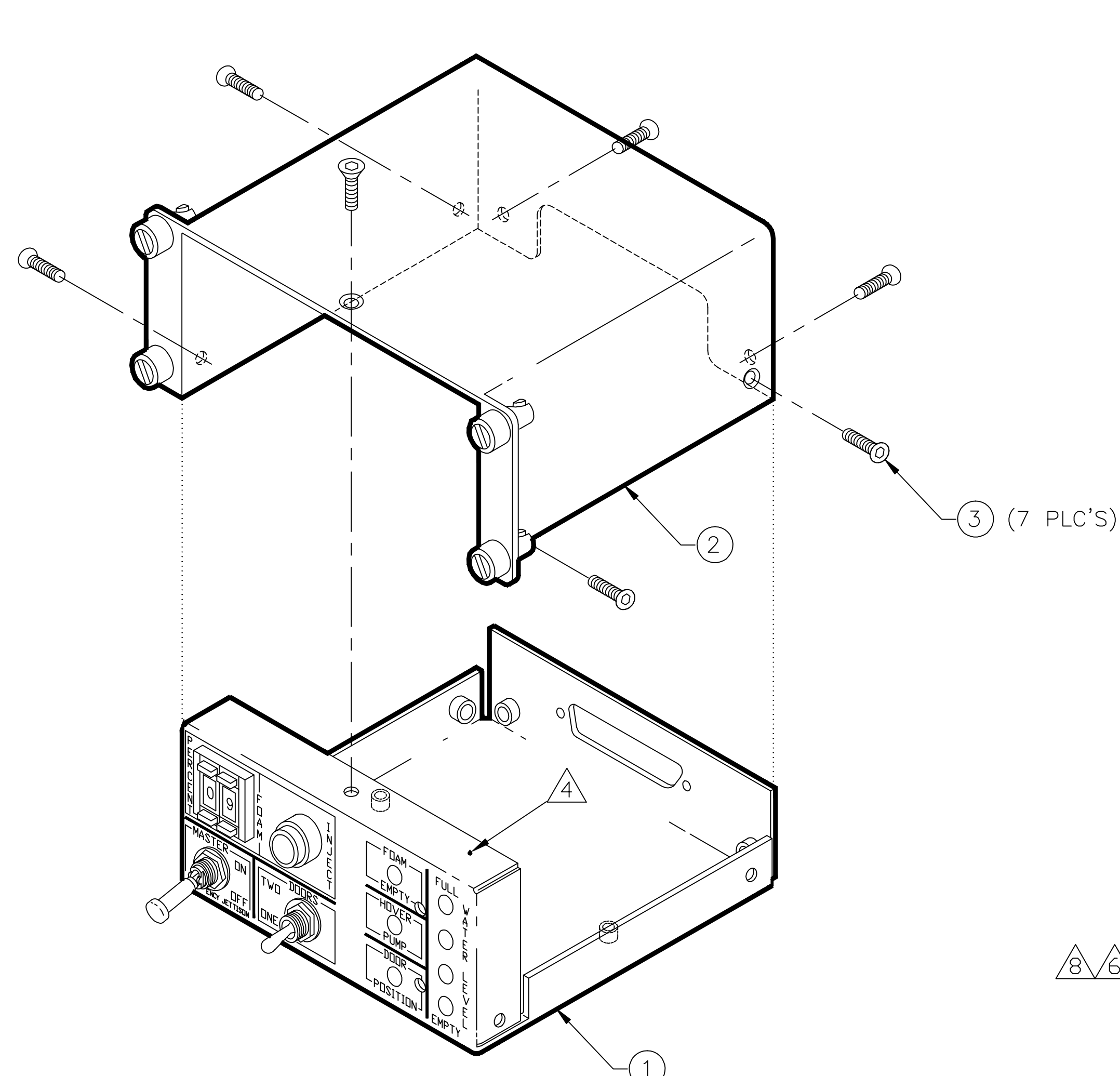


FIGURE 1-4

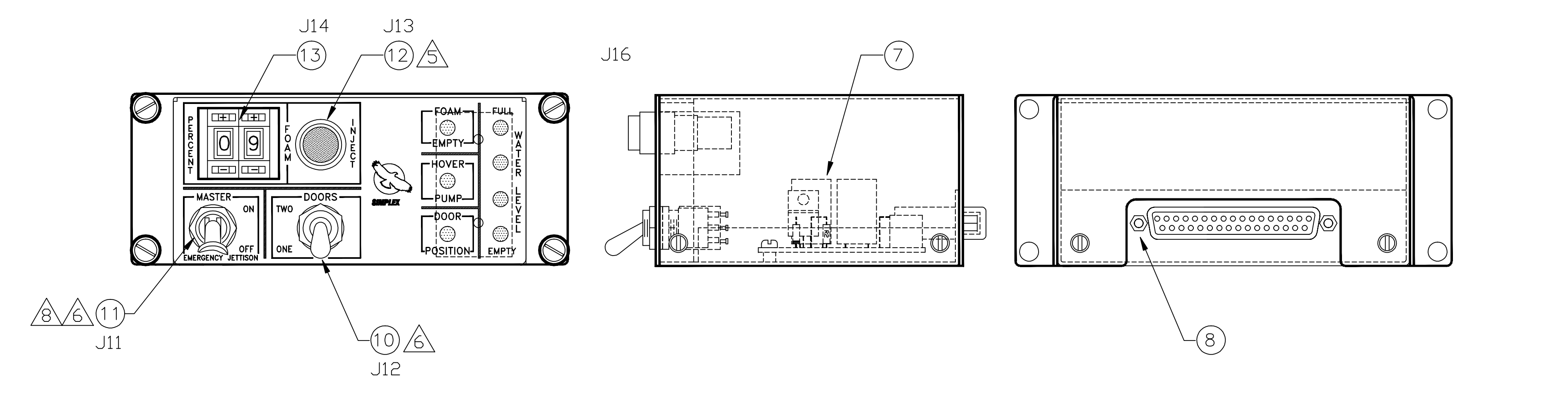
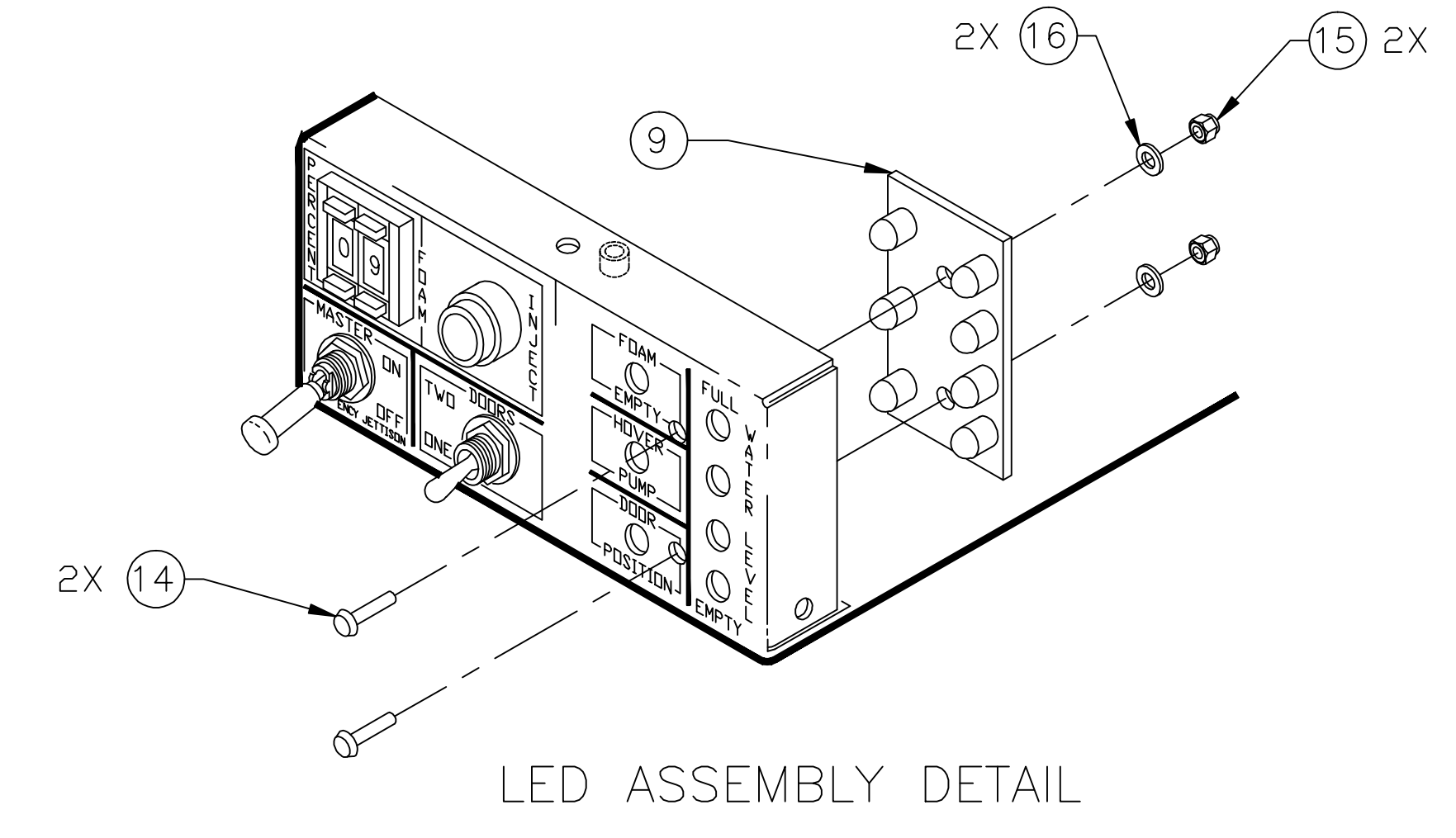
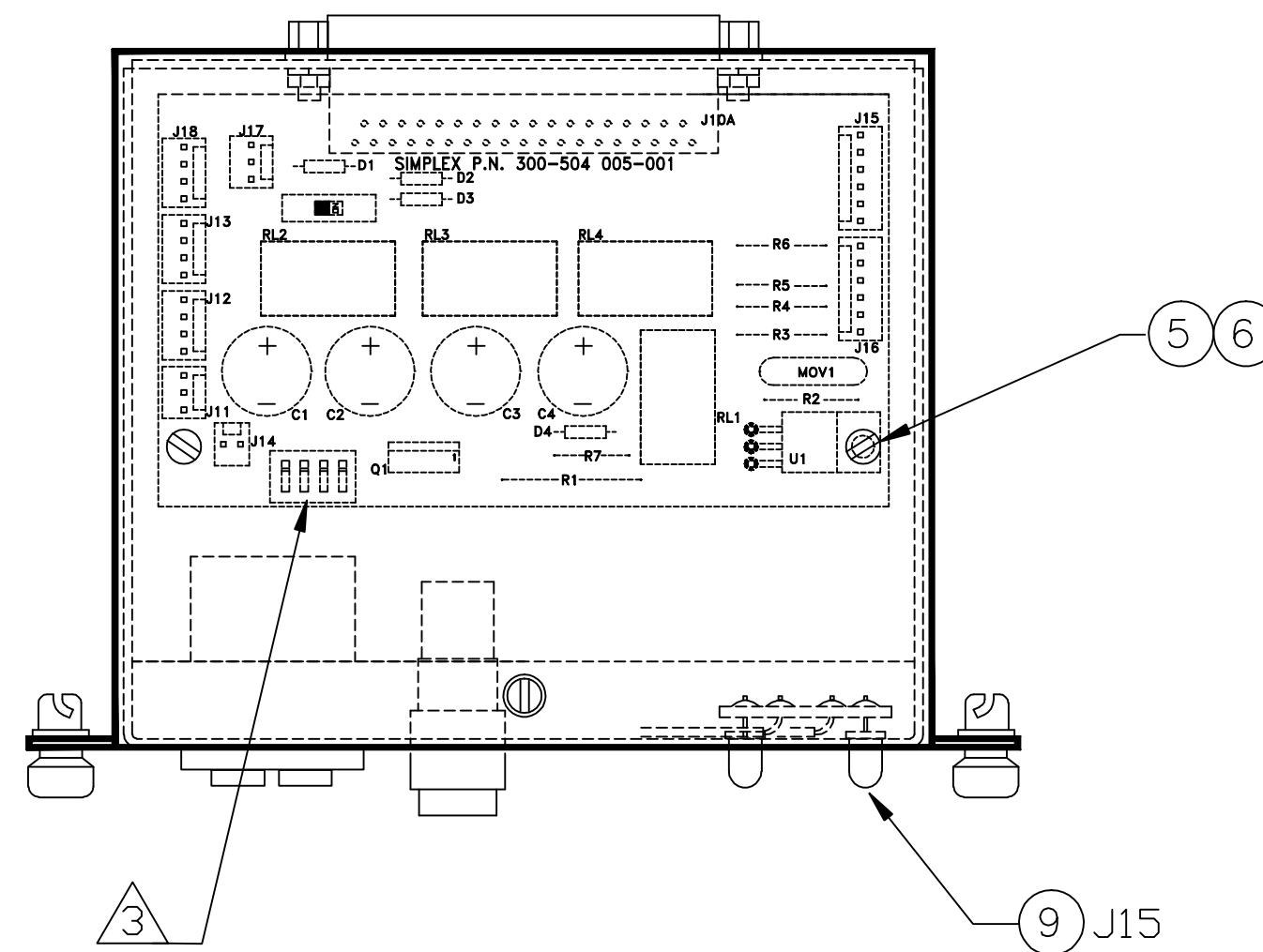
ATTACHMENT 1

THIS DOCUMENT CONTAINS INFORMATION OF A PROPRIETARY NATURE WHICH IS THE PROPERTY OF SIMPLEX MFG. CO. DISCLOSURE OF THE INFORMATION CONTAINED HEREIN TO ANY UNAUTHORIZED PERSON IS SPECIFICALLY PROHIBITED.

APPLICATION		REVISION HISTORY (Multi-sheet drawings carry some Rev level)			
NEXT ASSY.	USED ON	REV.	DESCRIPTION	DATE	APPROVED
308-501 001-001	MODEL 308	E	CHANGE PER DCN #3860	03/28/03	MRS
		F	CHANGE PER DCN #3959	05/09/03	MRS
		G	CHANGE PER DCN 5891, UPDATE LED GRAPHIC AT ZONE D-1, REMOVE ELECTRICAL SCHEMATIC AT ZONE B-5, ADD NOTE 7, ADD DELTA NOTE 8, ADD ITEMS 14-16, ADD GRAPHIC FOR EMERGENCY JETTISON AT ZONES B-8, B-5 AND D-2, UPDATE TO REFLECT CORRECT PART NUMBERS AND SIMPLEX REFERENCE NUMBERS.	01/31/07	WCS



STANDARD DISPLAY BOX ASSEMBLY



- NOTES:
- ITEMS 9, 10, 11, 12, 13 CONNECT ONTO FRICTION LOCK HEADERS ON P.C. BOARD PER JUNCTION NUMBER SHOWN.
 - FOR PART No. CLARIFICATION ON ALL SIMPLEX PURCHASE PARTS, SEE REPORT No. SM0352 OR SIMPLEX PART IDENTIFYING SHEET.
 - SWITCH POSITION:
 - #1 SWITCH FOR 220 μ f =OFF
 - #2 SWITCH FOR 470 μ f =ON
 - #3 SWITCH FOR 1000 μ f =OFF
 - #4 SWITCH FOR 1000 μ f =ON
 - ENGRAVE SERIAL NUMBER ON TOP OF BASE.
 - INSTALL 4 PIN CONNECTOR P/N 107987-004 AFTER INSTALLATION OF PUSH BUTTON SWITCH.
 - KEY UP ON ALL SWITCHES.
 - SEE ELECTRICAL SCHEMATIC FOR WIRING DETAILS. (REF. 308-500001-001)
 - NUT MUST BE INSTALLED WITH THE FLAT EDGE DOWN, PARALLEL WITH THE BOTTOM EDGE OF THE DISPLAY BOX. SEE GRAPHIC.

QTY.	PART OR IDENTIFYING NO.	NOMENCLATURE OR DESCRIPTION	ITEM
2	105081	1/8 X 1/4 PHENOLIC WASHER	16
2	111239-002	4-40 LOCKNUT	15
2	113007-001	4-40 BUTTON HEAD CAP SCREW	14
1	A 300-504 009-001	KNOBPOT ASSEMBLY	13
1	B 300-504 008-001	PUSH BUTTON ASSEMBLY	12
1	B 300-504 007-001	TOGGLE SWITCH (LOCKING) ASSEMBLY	11
1	A 300-504 006-001	TOGGLE SWITCH ASSEMBLY	10
1	C 300-504 010-001	LED ASSEMBLY	9
2	107990	JACK SCREW .312	8
1	C 300-504 005-003	CIRCUIT BOARD ASSEMBLY	7
2	112259-000	#4 LOCK WASHER SS	6
2	113009-000	4-40 X 1/4 PH SLH SS SCREW	5
	DELETED		4
7	113006-000	4-40 X 1/4 FH SOC SCREW (BLACK)	3
1	C 300-504 018-001	COVER ASSEMBLY, COCKPIT DISPLAY BOX	2
1	B 300-504 002-001	BASE WITH GRAPHICS, COCKPIT DISP. BOX	1

DRAWN BY:		DATE:		SIGNATURE:	
#	WORKING PART NUMBER	#	DATE	#	SIGNATURE
#	MATERIAL:	#	CHECKED BY:	#	DATE
#	FINISH:	#	PROJECT ENG. APPROVAL:	#	DATE
#		#	ON FILE	#	DATE

DRAWING NO.		REV.	
300-504 001-007	D		G
SCALE: NONE	SHEET: 1 OF 1		