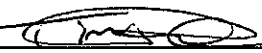




SERVICE LETTER
FOR SHROUD MODIFICATION
ON THE SIMPLEX MODEL 301

Document No.: SL2009-005
Date: June 4, 2009
Used On: Simplex Model 301

Approved by: _____


Tim Pyle
Sustaining Engineering and QA Manager
Simplex Mfg.



Log of Revisions

<u>Rev.</u>	<u>Description of Revision</u>	<u>Date</u>	<u>Approved</u>
I/R	Initial Release	June 4, 2009	TWP



SYSTEM MODELS AFFECTED:

Model 301 Fire Attack System (FAS)

SERIAL NUMBER EFFECTIVITY:

<u>S/N</u>	<u>MODEL NUMBER</u>	<u>DESCRIPTION</u>
301-003	301-000000-000	Model 301 Fire Attack System

FAA APPROVAL:

N/A

MANPOWER:

Two (2) MHRS (Estimated)

COMPLIANCE:

Required with taller version of the foam pump

SPECIAL TOOLS:

4" hole saw or other means to create a 4" diameter hole in fiberglass

MATERIALS:

Edge trim (to be provided by Simplex)

WEIGHT AND BALANCE:

None



ELECTRICAL LOAD DATA:

None

PUBLICATIONS AFFECTED:

None

ACCOMPLISHMENT INSTRUCTIONS:

Step	Description
1	Remove shroud from Model 301 Fire Attack System (FAS)
2	Drill pilot hole, approximately 1/4" diameter, at the location indicated in Figure 1-1.
3	Install shroud on Model 301 FAS.
4	Verify pilot hole is centered over foam pump (if pilot hole is off adjust location until centered over foam pump).
5	Remove shroud from Model 301 FAS.
6	Using pilot hole as center drill a 4" diameter hole in shroud.
7	Clean rough edges of 4" diameter hole.
8	Install edge trim to 4" diameter hole.
9	Install new foam pump to Model 301 FAS.
10	Install shroud.

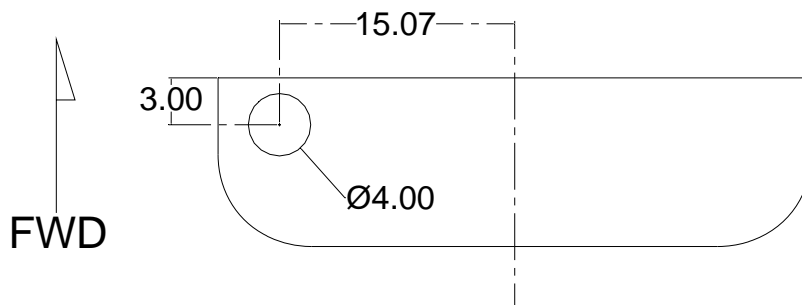


Figure 1-1 (Dimensions are in Inches)