



SERVICE LETTER

FOR THE MODIFICATION OF

THE DOOR ACTUATOR AND SHAFT ASSEMBLY

USED ON


SIMPLEX MODEL 304 FIRE ATTACK SYSTEMS


Document No.: SL 2008-004

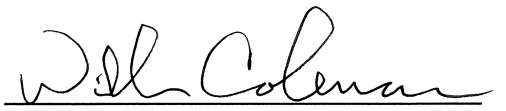
Date: 14 April 2008

Used On: Bell 205A-1, 212, 412,
412EP, UH1H Rotorcraft

Written by: 
Anthony M. Proger

Approved by: 
William C. Strait 14 Apr '08
V.P. of Engineering

Approved by: 
Joel Rodriguez
Manufacturing Manager

Approved by: 
William Coleman
Quality Assurance Manager



No: SL 2008-004
Date: 14 April 2008
Page 2 of 7

Log of Revisions

<u>Rev.</u>	<u>Description of Revision</u>	<u>Date</u>	<u>Approved</u>
I/R	Initial Release	04/14/08	WCS



SYSTEM MODELS AFFECTED:

Model 304 Fire Attack System

PART NUMBERS AFFECTED:

308-302020-003 Door Actuator and Shaft Assembly

SERIAL NUMBER EFFECTIVITY:

<u>S/N</u>	<u>MODEL NUMBER</u>	<u>DESCRIPTION</u>
001 - 042	304-000000-000	Model 304 Fire Attack

FAA APPROVAL:

Local Field Approval Required (This service letter is not FAA approved)

MANPOWER:

Ten (10) MHRS (Estimated)

COMPLIANCE:

Optional

HISTORY

The Model 304 Fire Attack System is designed for installation on Bell 205A-1, 212, 412, 412EP, and UH1H Rotorcraft. The system contains three (3) water drop doors two of which are supported through the tank via four (4) longitudinal baffles. Some customers have reported leaking from the aft portion of the outboard water drop doors. Simplex determined that these leaks can be prevented by adding an additional support aft portion of the door actuation shaft assembly.

This Service Letter kit provides additional support for the Door Actuator and Shaft Assembly.

MATERIALS:

<u>QTY</u>	<u>PART NUMBER</u>	<u>DESCRIPTION</u>
2	301-604009-001	Bearing Block Support Weldment
2	301-604008-001	Bearing Block
8	000-110090-000	Hex Head Bolt
8	000-111180-000	Nyloc Nut
16	000-112060-000	Flat Washer
4	000-110172-000	Hex Head Bolt
4	000-112362-000	Fender Washer
4	000-112080-000	Flat Washer

SPECIAL TOOLS:

None

WEIGHT AND BALANCE:

None

ELECTRICAL LOAD DATA:

None

REFERENCE:

Model 304 Installation Manual 304-102002-001 Revision F

PUBLICATIONS AFFECTED:

None



ACCOMPLISHMENT INSTRUCTIONS:

WARNING

Ensure that aircraft main power is turned off prior to starting this procedure.

1. Remove Model 304 Fire Attack System (FAS) from the rotorcraft per Model 304 Installation Manual Document 304-102002-001. Reference section 2.4.10 Removal of Fire Attack System.
2. Prepare a flat surface large enough to support the Model 304 FAS; the surface should be covered with a protective layer (i.e. moving blanket) to place tank on for installation of the kit.
3. Place tank on work surface with doors facing up.
4. Lift up one of the full size doors to gain access to its internal torque tube.
5. Place bearing block 301-604008-001 on the forward actuator torque tube per Figure 1.

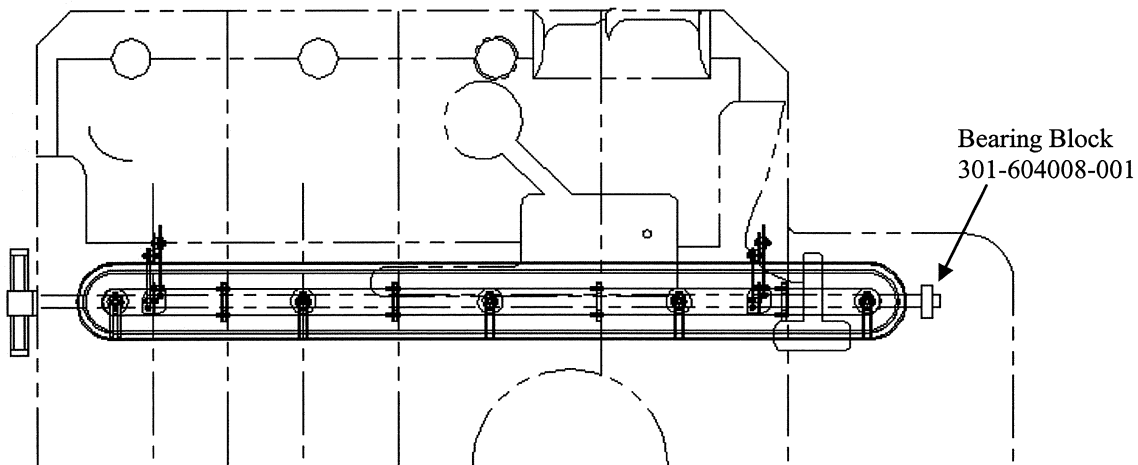


Figure 1

6. Place bearing block support weldment 301-604009-001 on actuator shaft per Figure 2.

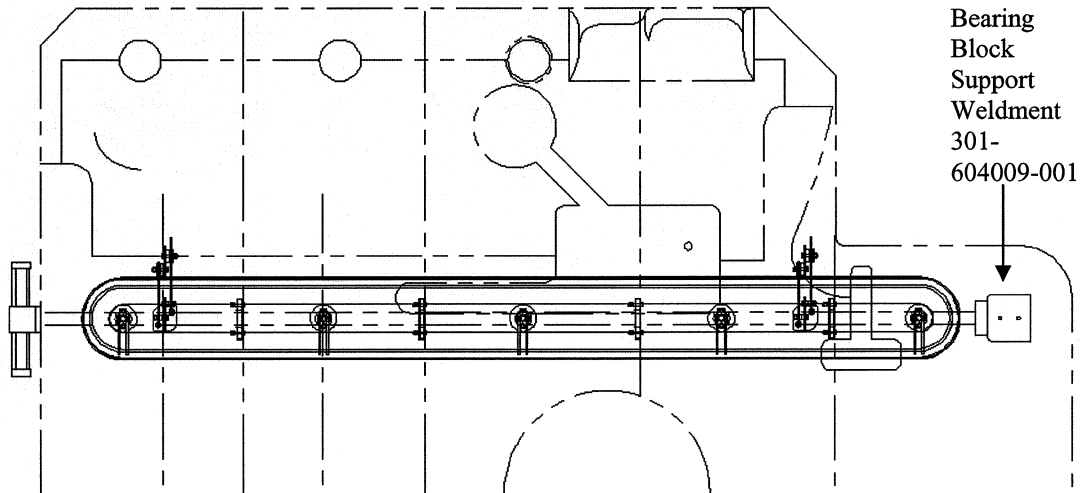


Figure 2

7. Square the bearing block to the bearing block support weldment. Match drill the bearing block support weldment.
8. Attach the bearing block to the bearing block support weldment. Reference Figure 3.

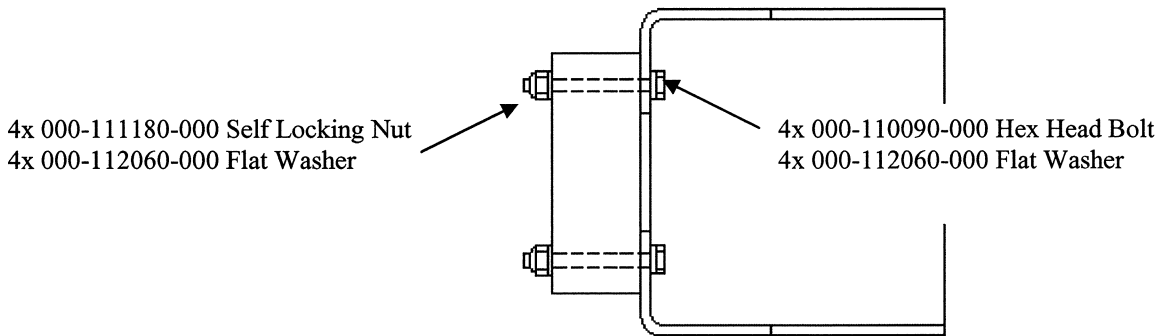


Figure 3

9. Place bearing block assembly onto the actuator shaft. Position the assembly so the base holes are aft of the door foam radius and match drill through the tank shell.



10. Remove the bearing block assembly and apply a liberal coating of RTV to the bottom surface of the bracket.
11. Install the bearing block assembly per Figure 4. Apply RTV to each bolt and washer as it is installed into the tank.

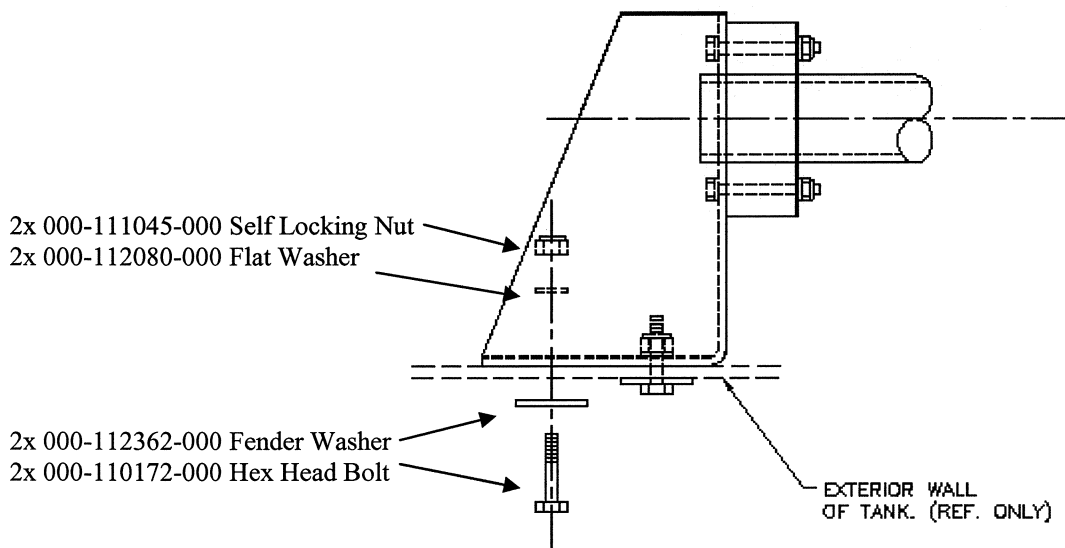


Figure 4

12. Torque fasteners until snug. Over tightening will cause foam to compress.
13. Repeat on opposite side.